

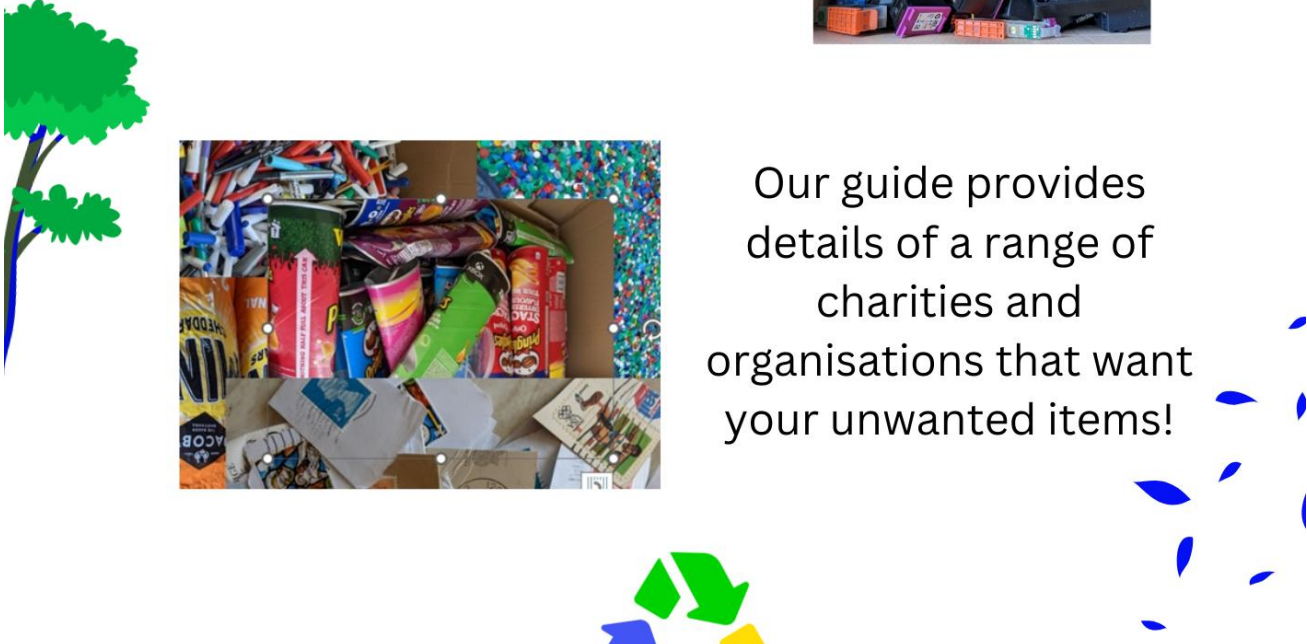


# We Need That!



## Dorset Guide to Rehoming Your Unwanted Stuff

Your unwanted items could be used by good causes to make new items, raise funds or support their activities.



Our guide provides details of a range of charities and organisations that want your unwanted items!



**Win On Waste**<sup>®</sup>



**Supporting local people to help their environment**

## **Requested Items**

The listing contains details of items collected by charities and not-for-profit organisations collecting unwanted/broken/used items for reuse or recycling. Please note that information is subject to change and you are advised to contact the organisation directly before making a special trip.

A regularly updated version of our directory is also available online at [www.winonwaste.org/recycling-resources/](http://www.winonwaste.org/recycling-resources/)

If you are an individual collecting recyclable items for charity, or represent an organisation that is collecting items or requires something specific, please let us know – we can add you to the directory and let our donors know what you need. Email us or see our website for more details ([www.winonwaste.org](http://www.winonwaste.org))

See organisation listing (page 8) for more details on how to donate.

| <b>Items</b>  | <b>Organisation</b>   | <b>Area</b>   |
|---|---|---|
| <b>Aqua Optima Water Filters—this brand only</b>                          | Win on Waste  | Across BCP, Wimborne and Lytchett Matravers                                   |
| <b>Artificial flowers</b>   | Dorset Scrapstore<br>Space Youth Project                      | Poole   |
| <b>Badge Holders</b>  | Space Youth Project   |   |
| <b>Bark Chippings</b>   | Grounded Community  | Boscombe  |
| <b>Baskets</b>  | Dorset Scrapstore   | Poole   |
| <b>Baskets (for flower arranging)</b>                                     | Seed2Plate  |   |
| <b>Beach toys - Broken/unwanted plastic beach toys</b>                    | Weymouth & Portland Marine Litter Project                     | Weymouth & Portland   |
| <b>Beauty body care: plastic cap, packaging</b>                           | Win on Waste  | Across BCP, Wimborne and Lytchett Matravers                                   |
| <b>Birthday cards (unused only)</b>                                       | Dorset Scrapstore   | Poole   |
| <b>Biscuit wrappers (any make or variety of sweet or savoury biscuit)</b> | Win on Waste<br><br>Friends Of Malmesbury Park Primary School | Across BCP, Wimborne and Lytchett Matravers<br>Bournemouth                    |
| <b>Bottle Tops - Milk</b>   | SturAction<br>Museum of East Dorset<br>Win on Waste           | Sturminster Newton<br>Wimborne<br>Across BCP, Wimborne and Lytchett Matravers |
| <b>Bras</b>   | SturAction<br>Win on Waste                                    | Sturminster Newton<br>Across BCP, Wimborne and Lytchett Matravers             |

|   |   |   |
|---|---|---|
| <b>Bread bags (used—clean and empty of crumbs please) – includes other bakery plastics e.g. croissants/crumpets etc wrappers but NOT the paper bags with a plastic window</b> | Win on Waste<br><br>Friends Of Malmesbury Park Primary School | Across BCP, Wimborne and Lytchett Matravers Bournemouth                                     |
| <b>Bric-a-brac</b>  | Dorset Reclaim  | Bournemouth, Poole and Dorchester   |
| <b>Bubble wrap</b>  | Dorset Blind Association                                      | Bridport, Broadstone, Christchurch, Ferndown, Parkstone, Portland, Southbourne and Weymouth |
| <b>Cables/wires</b>   | Can-Do BCP<br><br>Win on Waste                                | Bournemouth, Christchurch Across BCP, Wimborne and Lytchett Matravers                       |
| <b>Cake wrappers e.g. Jaffa, chocolate rolls</b>  | Win on Waste  | Across BCP, Wimborne and Lytchett Matravers   |
| <b>Cameras (no leads)</b>   | Transform Trade via Fair Ground Shop<br>Win on Waste          | Wimborne Across BCP, Corfe Mullen and Lytchett Matravers                                    |
| <b>Card making equipment</b>  | Dorset Scrapstore<br>Space Youth Project                      | Poole   |
| <b>Cellophane (coloured or clear, in rolls)</b>   | Dorset Scrapstore   | Poole   |
| <b>Christmas cards (NOT glitter) (any rectangular card including Christmas—size 6"x4" or larger)</b>  | St Michael's Church   | Wimborne and via some Win on Waste sessions   |
| <b>Christmas cracker - novelties, hats etc</b>  | Dorset Scrapstore   | Poole   |
| <b>Christmas wrapping paper rolls</b>   | Dorset Scrapstore   | Poole   |
| <b>Clothing</b>   | Dorset Reclaim  | Bournemouth, Poole and Dorchester   |
| <b>Coat hangers</b>   | Dorset Reclaim  | Bournemouth, Poole and Dorchester   |

|   |  |   |
|---|--|---|
| <b>Coffee Grounds</b>   | Grounded Community                                     | Boscombe  |
| <b>Coins (old and foreign currency)</b>   | Marie Curie<br>Win on Waste                            | Across BCP, Corfe Mullen, Wimborne and Lytchett Matravers |
| <b>Computers/tablets</b>  | Can-Do BCP<br>Win on Waste                             | Across BCP, Corfe Mullen, Wimborne and Lytchett Matravers |
| <b>Corks</b>  | Dorset Scrapstore                                      | Poole   |
| <b>Craft books, magazines and patterns</b>  | Space Youth Project                                    |   |
| <b>Crafting equipment</b>   | Seed2Plate<br>Space Youth Project<br>Dorset Scrapstore | Wimborne<br><br>Poole                                     |
| <b>Crochet hooks</b>  | Dorset Scrapstore<br>Space Youth Project               | Poole   |
| <b>Currency (any coins or notes)</b>  | Transform Trade via Fair Ground Shop                   | Wimborne  |
| <b>Dressmaking equipment</b>  | Dorset Scrapstore                                      | Poole   |
| <b>Drink cans</b>   | Wimborne Community Garden                              | Wimborne  |
| <b>Dumpy bags (heavy duty waste bags)</b>   | Seed2Plate   |   |
| <b>Ear defenders</b>  | Seed2Plate   |   |
| <b>Electrical items</b>   | Dorset Reclaim   | Bournemouth, Poole and Dorchester                         |
| <b>Envelopes - unused</b>   | Space Youth Project                                    |   |
| <b>Fabric (of over 0.5m)</b>  | Dorset Scrapstore                                      | Poole   |
| <b>Felt</b>   | Dorset Scrapstore<br>Space Youth Project               | Poole   |
| <b>First Day covers (stamps)</b>  | Marie Curie  |   |
| <b>Fishing net/line</b>   | Weymouth & Portland Marine Litter Project              | Weymouth & Portland                                       |
| <b>Flower pots - small compostable</b>  | Seed2Plate   |   |
| <b>Fruit net bags</b>   | Seed2Plate   |   |
| <b>Furniture</b>  | Dorset Reclaim   | Bournemouth, Poole and Dorchester                         |
| <b>Game consoles (no leads), Games consoles, games and accessories (working or non-working)</b> | Transform Trade via Fair Ground Shop<br>Marie Curie    | Wimborne  |
| <b>Garden ornaments—e.g. solar lights—must be working</b>                                       | Seed2Plate   | Wimborne  |
| <b>Garden tools</b>   | Seed2Plate   | Wimborne  |
| <b>Garden tools - secateurs, loppers, sharpeners</b>  | Grounded Community                                     | Boscombe  |

|  |   |  |
|--|---|--|
| <b>Gardening gloves - adult and child</b>  | Seed2Plate  | Wimborne   |
| <b>Greetings cards (new)</b>   | Space Youth Project   |  |
| <b>Greetings cards (any rectangular card including Christmas—size 6"x4" or larger)</b> | St Michael's Church   | Wimborne and via Win on Waste sessions   |
| <b>Guttering &amp; Fittings</b>  | Seed2Plate  |  |
| <b>Handbags</b>  | Dorset Reclaim  | Bournemouth, Poole and Dorchester  |
| <b>Ink cartridges - old used printer cartridges only, NOT toner cartridges</b>         | Forest Holme Hospice Charity<br>Cherry Tree Nursery<br>Dorset Family History Society<br>Friends Of Malmesbury Park Primary School<br>Win on Waste | Poole<br>Bournemouth<br>Bournemouth<br>Across BCP,<br>Wimborne and<br>Lytchett Matravers       |
| <b>iPads (working or non-working)</b>  | Marie Curie   |  |
| <b>Jewellery (broken odd beads, chains etc)</b>  | Dorset Scrapstore<br>Transform Trade via Fair Ground Shop   | Poole<br>Wimborne  |
| <b>Jewellery making equipment</b>  | Dorset Scrapstore<br>Space Youth Project  | Poole  |
| <b>Keys</b>  | Win on Waste  |  |
| <b>Knitting needles</b>  | Dorset Scrapstore   | Poole  |
| <b>Lace</b>  | Dorset Scrapstore   | Poole  |
| <b>Litter pickers</b>  | Seed2Plate<br>Space Youth Project   |  |
| <b>Make up and squeezezy hand, foot and face creams,</b>                               | Friends Of Malmesbury Park Primary School<br>Win on Waste   | Bournemouth<br><br>Across BCP, Corfe Mullen, Wimborne and Lytchett Matravers                   |
| <b>Manure</b>  | Seed2Plate  |  |
| <b>Marigold Cleaning Gloves and Packaging (ONLY Marigold Brand)</b>                    | Win on Waste  | Across BCP, Corfe Mullen, Wimborne and Lytchett Matravers                                      |
| <b>Mobile phones</b>   | Forest Holme Hospice Charity<br>Can-Do BCP<br>Marie Curie<br>Space Youth Project<br>Win on Waste  | Poole<br>Bournemouth,<br>Christchurch<br><br>Across BCP,<br>Wimborne and<br>Lytchett Matravers |
| <b>Money off coupons - in date</b>   | Cherry Tree Nursery   | Bournemouth  |

|   |   |   |
|---|---|---|
| <b>MP3 players</b>  | Marie Curie   |   |
| <b>Mulching Materials (e.g. Hay, Straw)</b>                                     | Seed2Plate<br>Grounded Community  | Wimborne<br>Boscombe  |
| <b>Needles</b>  | Dorset Scrapstore<br>Space Youth Project  | Poole   |
| <b>Needlework equipment</b>   | Dorset Scrapstore<br>Space Youth Project  |   |
| <b>Organic manure</b>   | Grounded Community  | Boscombe  |
| <b>Padlocks</b>   | Seed2Plate<br>Win on Waste  | Across BCP,<br>Wimborne and<br>Lytchett Matravers                           |
| <b>Pallets</b>  | Seed2Plate  |   |
| <b>Patterns (needlework and dressmaking)</b>                                    | Dorset Scrapstore   | Poole   |
| <b>Pencils</b>  | Dorset Scrapstore<br>Space Youth Project  | Poole   |
| <b>Pet medication (new and part-used)</b>                                       | Worldwide Veterinary Service  | Based in<br>Cranborne but<br>also postal                                    |
| <b>Picture frames—large gold 'antique style'</b>                                | Dorset Scrapstore   | Poole   |
| <b>Plant pots</b>   | Seed2Plate  |   |
| <b>Plants</b>   | Seed2Plate<br>Dorset Reclaim  | Bournemouth,<br>Poole and<br>Dorchester                                     |
| <b>Plastic items - other large rigid plastic items such as vegetable crates</b> | Weymouth & Portland Marine Litter Project   | Weymouth & Portland   |
| <b>Plastic rope</b>   | Weymouth & Portland Marine Litter Project   | Weymouth & Portland   |
| <b>Postcards - used</b>   | The Liz Clarke-Saul Fund for Adamantinoma Research with the Bone Cancer Research Trust CIO 1159590<br>MAF UK via Win on Waste | Broadstone<br><br>Across BCP, Corfe Mullen, Wimborne and Lytchett Matravers |
| <b>Pringle tubes (metal bottoms only)</b>                                       | Friends Of Malmesbury Park Primary School<br>Win on Waste   | Bournemouth<br>Across BCP,<br>Wimborne and<br>Lytchett Matravers            |
| <b>Raffle prize items</b>   | Seed2Plate  |   |
| <b>Ribbon</b>   | Dorset Scrapstore<br>Space Youth Project  | Poole   |
| <b>Rugs</b>   | Dorset Reclaim  | Bournemouth,<br>Poole and<br>Dorchester                                     |

|  |   |   |
|--|---|---|
| <b>Satnavs</b>                                 | Marie Curie   |   |
| <b>Scrap metal</b>                             | Dorset Reclaim  | Bournemouth,<br>Poole and<br>Dorchester                             |
| <b>Seed trays</b>                              | Seed2Plate<br>Museum of East Dorset   | Wimborne  |
| <b>Seeds and cuttings</b>                      | Seed2Plate  |   |
| <b>Stamps</b>                                  | The Liz Clarke-Saul Fund for<br>Adamantinoma Research with the Bone<br>Cancer Research Trust CIO 1159590<br>Marie Curie<br>Win on Waste | Broadstone<br><br>Across BCP,<br>Wimborne and<br>Lytchett Matravers |
| <b>Sticker Sheets &amp; White Labels</b>       | Dorset Scrapstore   | Poole   |
| <b>Storage hooks</b>                           | Seed2Plate  |   |
| <b>String &amp; cotton</b>                     | Dorset Scrapstore   | Poole   |
| <b>Tablet Computers</b>                        | Marie Curie<br>Win on Waste   | Across BCP,<br>Wimborne and<br>Lytchett Matravers                   |
| <b>Terracotta Flowerpots</b>                   | Cherry Tree Nursery   | Bournemouth   |
| <b>Trowels</b>                                 | Dorset Scrapstore   | Poole   |
| <b>Vases</b>                                   | Forget-Me-Not Florals,  | Christchurch  |
| <b>Watches (including broken)</b>              | Transform Trade via Fair Ground Shop  | Wimborne  |
| <b>White goods</b>                             | Dorset Reclaim  | Bournemouth,<br>Poole and<br>Dorchester                             |
| <b>Wood - large oddments</b>                   | Seed2Plate<br>Dorset Scrapstore<br>Dorset Reclaim   | Wimborne<br>Poole<br>Bournemouth,<br>Poole and<br>Dorchester        |
| <b>Wool, *plus wool from jumpers to unpick</b> | Dorset Scrapstore<br>Tesco, Fleetsbridge<br>New Forest for Ukraine (via Win on Waste)   | Poole<br><br>Christchurch   |
| <b>Wrapping paper</b>                          | Dorset Scrapstore<br>Space Youth Project  | Poole   |
| <b>Yarn &amp; thread</b>                       | Dorset Scrapstore   | Poole   |
| <b>Zips</b>                                    | Dorset Scrapstore   | Poole   |

There are also numerous charity shops across the county that take general donations of good quality clothing and household items (*if you wouldn't buy it, please don't donate it*), staffed by volunteers and with limited space. We would always recommend double checking they are taking donations before making a special trip – bear in mind that they will have to pay to dispose of items that cannot be sold in their shop.

## Organisation Information

Details of charities and not-for-profit organisations collecting unwanted/broken/used items for reuse or recycling. Please note that information is subject to change and you are advised to contact the organisation directly before making a special trip.

| <b>Organisation</b>                  | <b>Information</b>   | <b>Contact Details</b>  |
|--------------------------------------|--|---|
| <b>Can-Do BCP</b>                    | Collects laptops for recycling or for refurbishing, to be handed back to those in need.  | Can be dropped off at Christchurch Win on Waste (see winonwaste.org) or a variety of drop off points in Christchurch and Bournemouth see website <a href="http://www.can-do-bcp.com">www.can-do-bcp.com</a>   |
| <b>Cherry Tree Nursery</b>           | Promotes therapeutic horticulture as a basis to provide realistic work experience in a non-pressured environment, allowing those struggling with their mental health the opportunity to flourish.  | Deliver to the nursery at Northbourne, Bournemouth, BH10 7DA. 10:00am - 3:00pm, Cherry Tree Nursery contact Ray Alderton 01202 593537 <a href="mailto:events@cherrytreenursery.org.uk">events@cherrytreenursery.org.uk</a>  |
| <b>Dorset Blind Association</b>      | Ensuring that everything they do makes life better for people living with sight loss in Dorset, and their families.  | Drop in to any of their shops during published opening hours <a href="https://dorsetblind.org.uk/help-us/charity-shops/">https://dorsetblind.org.uk/help-us/charity-shops/</a>  |
| <b>Dorset Family History Society</b> | Our aim is to promote the study of family history and to assist those researching their ancestors.   | Email Lorraine Squires, Secretary <a href="mailto:secretary@dorsetfhs.org.uk">secretary@dorsetfhs.org.uk</a>  |
| <b>Dorset Reclaim</b>                | Local charity which supplies quality household items, promotes opportunity & social inclusion and protects the environment through encouraging reuse & recycling and reducing the amount going to landfill.  | (Poole—Kirsty 01202 679080)<br>(Bournemouth—Joanna 01202 773384)<br>(Dorchester - (01305) 267711). We do offer a Bulky Household Service on 01202 679350 where we can dispose of larger items customers cannot themselves.  |
| <b>Dorset Scrapstore</b>             | Provides a community crafting hub that facilitates the re-use of scrap materials, helping the Dorset community to use scrap resources for creative purposes by providing individuals, schools, clubs, students & families with access to affordable recycled craft making materials. | Deliver to Dorset Scrapstore, Unit 23 Cortry Close, Poole, BH12 4BQ (turn off Alder Road between McDonalds and the Gas Appliance Superstore), 07565 577094 or see website for opening hours - if you have similar crafting related items you feel may be of use, get in touch to check. |
| <b>Forest Holme Hospice Charity</b>  | Forest Holme Hospice offers support and care to patients and families facing life-limiting illnesses in Poole, Wimborne, and Purbeck.  | Contact Kathy McNally 01202 670644 <a href="mailto:Kathy@forestholmehospice.org.uk">Kathy@forestholmehospice.org.uk</a><br>Canon, Dell, Lexmark, Neopost, Samsung and HP only   |

|  |   |  |
|--|---|--|
| <b>Forget-Me-Not Florals</b>                     | Sharing bunches of kindness, they recycle, restyle and deliver flowers to individuals in care homes and hospices.   | Via Christchurch and Southbourne Win on Waste sessions - see <a href="http://winonwaste.org">winonwaste.org</a> for details.   |
| <b>Friends Of Malmesbury Park Primary School</b> | Malmesbury Park Primary school are currently fundraising for renovations of the outdoor garden area.  | Malmesbury Park Primary School, Lowther Road, Bournemouth, Dorset, BH8 8LU<br>Contact Caroline Barry<br>(FOMPPS@malmesburypark.bournemouth.sch.uk)   |
| <b>Grounded Community</b>                        | Charity based in Boscombe, Bournemouth. Works with others to give community access to healthy, nutritious food. Grow fruit and veg, provide workshops, redistribute food surplus and create networks to help others share food. | Contact Theresa McManus 07958 138053, email <a href="mailto:Theresa.mcmanus@hotmail.co.uk">Theresa.mcmanus@hotmail.co.uk</a> , <a href="https://groundedcommunity.co.uk/">https://groundedcommunity.co.uk/</a> |
| <b>MAF UK (Mission Aviation Fellowship)</b>      | Mission Aviation Fellowship (MAF) is the world's largest humanitarian air operator, enabling more than 1,500 aid, development and mission organisations to bring medical care, emergency relief and long-term development.      | Via Win on Waste - <a href="mailto:contact@winonwaste.org">contact@winonwaste.org</a> 07771 705662 or check session information at <a href="http://www.winonwaste.org">www.winonwaste.org</a>                  |
| <b>Marie Curie</b>                               | UK's leading end of life charity, there for anyone with an illness they're likely to die from, and those close to them.   | Contact Lorraine Nutland, 01202 474890 or 07767 623132<br><a href="mailto:lorrainenutlandmc@yahoo.co.uk">lorrainenutlandmc@yahoo.co.uk</a>   |
| <b>Museum of East Dorset</b>                     | A vibrant museum and cultural hub which connects people with the past and offers enjoyment, learning and inspiration to visitors of all ages.   | Contact Sharon Sutcliffe at <a href="mailto:events@museumofeastdorset.co.uk">events@museumofeastdorset.co.uk</a>   |
| <b>Seed2Plate</b>                                | Seed to Plate is a community project which will re-purpose plots of land to grown fresh fruit and vegetables to feed and support people from lower income families.   | Contact James Burden via email on <a href="mailto:james.burden@live.co.uk">james.burden@live.co.uk</a> 07940 518798  |
| <b>Space Youth Project</b>                       | Supporting young people who are or may be LGBT+ and empower them to have positive self-esteem, to know they are supported, to have a sense of community.  | Contact Helen Walsh 07973 405280<br><a href="mailto:helen@spaceyouthproject.co.uk">helen@spaceyouthproject.co.uk</a>   |

|   |   |   |
|---|---|---|
| <b>St Michael's Church, Colehill</b>  | Cards used to make new cards and sold to make funds for work of the church in South Sudan.  | John Spatchet 01202 886688 or j.spatchet@gmail.com - cards are also collected for this project through some Win on Waste sessions (winonwaste.org for details)  |
| <b>SturAction</b>   | SturAction is a Sturminster Newton "not for profit" company raising funds from pre-loved goods to use the profits on projects to benefit the town. In addition, we recycle bottle tops and bras.  | Visit their website for more details - sturminster-newton.org.uk/sturaction-sturminster-newton-community-benefit-society-ltd  |
| <b>The Liz Clarke-Saul Fund for Adamantinoma Research with the Bone Cancer Research Trust CIO 1159590</b> | The Bone Cancer Research Trust is the charity that offers hope to people affected by primary bone cancer.   | Lesley Saul, 01202 257458 lesley.saul@ntlworld.com Collection box in Broadstone Library or email/telephone to arrange delivery  |
| <b>Transform Trade</b>  | Work in partnership with networks of workers, farmers and social entrepreneurs in South Asia and East Africa to transform trade so that everyone benefits.  | Via Fairground, 1 Cornmarket Court, Wimborne BH21 1JL email fairground21@googlemail.com   |
| <b>Weymouth &amp; Portland Marine Litter Project</b>  | Main objective is to create community-based projects aimed at reducing the pollution from litter in our seas and on our beaches. They recycle broken or unwanted plastic beach toys, rope, fishing net, fishing line, large plastic items such as vegetable crates. | Visit their website for details of what they take and where to take them or email marinelitter@outlook.com. <a href="https://www.weymouthportlandmarinelitterproject.org/recycling">https://www.weymouthportlandmarinelitterproject.org/recycling</a> |
| <b>Wimborne Community Garden</b>  | A place for the community to come together, share skills and grow food. We will be growing fresh produce for the Beaucroft cafe and the local food bank. They collect used aluminium drink cans which get recycled to raise funds for the garden.                   | Cans can be taken to Wimborne Win on Waste (see winonwaste.org) or to Wimborne Community Garden during opening hours) wimbornecommunitygarden@gmail.com   |
| <b>Win on Waste</b>   | Win on Waste acts for the protection of the environment by empowering local people to learn about the origins of their household waste and how to reduce their impact on the planet.  | Contact@winonwaste.org 07771 705662 or check session information at <a href="http://www.winsonwaste.org">www.winsonwaste.org</a>  |

|                                     |  |  |
|-------------------------------------|--|--|
| <b>Worldwide Veterinary Service</b> | Worldwide Veterinary Service provides free expert care to animals in need all over the world. By sending vets where they are needed most, training them to increase the standard of care globally and by shipping urgent aid supplies worldwide. | Visit their website for more information <a href="https://wvs.org.uk/support-us/donate-medication/">https://wvs.org.uk/support-us/donate-medication/</a> |
|-------------------------------------|--|--|

## **Would you like to see your collection here?**

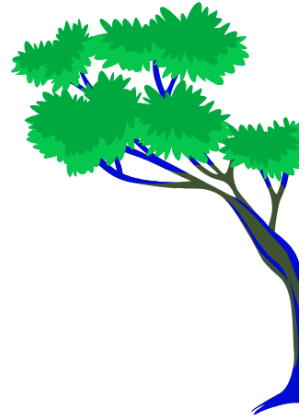
If you are an individual collecting recyclable items for charity, or represent an organisation that is collecting items or requires something specific, please let us know – we can add you to the directory and let our donors know what you need. Email us or see our website for more details

([www.winonwaste.org](http://www.winonwaste.org))

## **About Win on Waste**

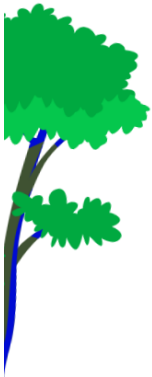
Win on Waste has been working in the BCP & Dorset Council areas since 2014, running monthly sessions to collect hard-to-recycle waste which benefits local charities and the environment. We promote collective action in reducing the amount of waste going into landfill, increasing the amount of waste that is responsibly recycled and also educate communities on how to become more sustainable in their own households.

Our project provides a one-stop-shop for local people to responsibly recycle a wide range of common household items that have no easy route to recycling. We promote collective community action towards the climate crisis and help local charities, often specific to the communities we work in, by collecting waste items that can help their fundraising or project work.



**Win On Waste<sup>®</sup>**

**We're Winning on Waste**



Win on Waste - Charity Number 1170422

07421 126489, [volunteers@winonwaste.org](mailto:volunteers@winonwaste.org) [www.winonwaste.org](http://www.winonwaste.org)  
Facebook: @winonwastedorset Instagram: @winonwaste

Registered address: c/o Community Action Network, Northmead House,  
Northmead Drive, Creekmoor, Poole, BH17 7RP



**Supporting local people to help their environment**

